

## Mitu GPS tracking device

### Overview

Accessories: Mitu GPS tracking device x1, silicone strap x1  
x1 manual, warranty card x1.

Holes for a carrying strap

Silicon strap

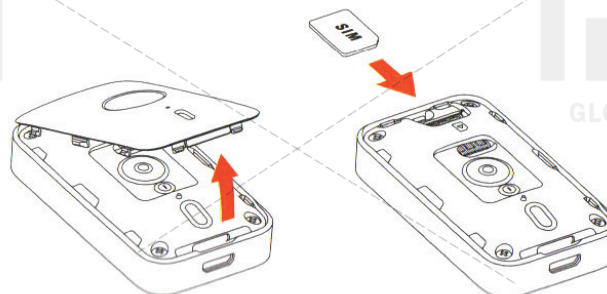
Microphone

Speaker

Indicator

Function Button

Charging port



### Installation of app



To install an application «Mitu GPS tracking device», scan QR-code, or search and download it at APP Store. QR-code is used to set the APP and further interfaces with a telephone. Please keep it properly.

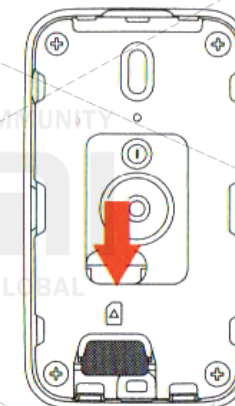
### Installation of SIM card

Open a front panel of the device, insert a SIM card with a chip down into appropriate slot. Close a cover of the device. (You need to buy a SIM card for this device).

Support SIM card: Nano-SIM card.  
Support operator: China Mobile, China Unicom ...

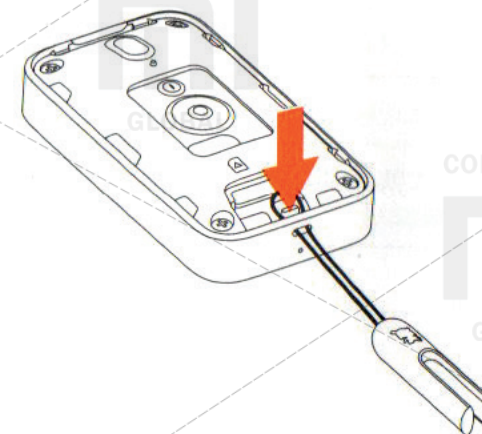
### Extracting of SIM card

Note: Please select a suitable operator. Proper positioning, execution of calls and other functions will depend on the operator's signal. Using of cropped cards may damage a slot, or you can not insert or withdraw it from a slot.



Open a cover of the device, using a thin object, push a SIM card in order to withdraw it from a slot.

### Using of strap

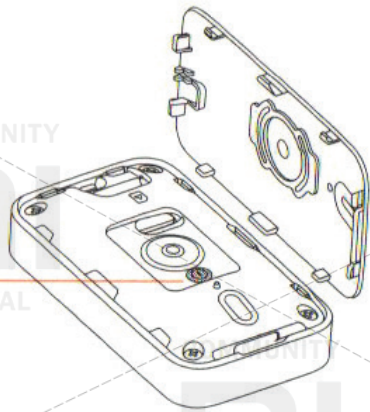


Open a cover of the device, thread a strap through the hole at the bottom of device and fix it.

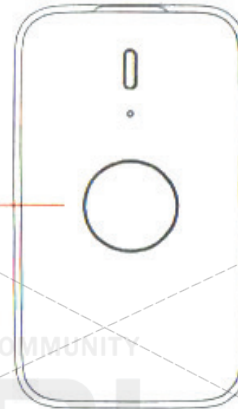
Version 1.0 07.2016

xiaomi-mi.com

## Switching on the device



Function Button



**Switching on:** Open a cover of the device, press and hold a power button for 3 seconds until white indicator lights.

**Off:** When enabled, open the device, press and hold for 3 seconds a power button or established mobile application, click off the device.

**The solution of problems:** if there were any problems with normal operation of the device, press and hold for 3 seconds a power button to restart the device.

## Pairing of devices

Start the APP, follow its guidance, scan a QR-Code. After you hear a sound notification of «request for pairing», press a function key for a successful pairing.

Successful pairing: sound notification «pairing completed successfully.»

Interface error: notification sound «gateway error» and red indicator lights.

Methods to resolve pairing problems:

1. If you have a poor internet signal, it may be a connection

error. Change your location and try to re-pair.

2. If you can not use QR-code, you can press 16 times on a function key, then you will receive a six-digit identification number of the device.

## Using the device

After a successful pairing, the device determines a current status by an indicator.

Performing a network connection after pressing a function button: **constant blue indicator**.

The lack of connections to server after clicking on a function button: **constant yellow indicator**.

After pressing a function button, absence of SIM card or SIM card is not registered in network: **constant red indicator**.

Searching of device location: **flashing blue indicator**.

Alarm clock: **flashing yellow indicator**.

## Making calls

**Call:** Press a function key twice to select a contact number. Press and hold a function button for 3 seconds to start dialing (with white indicator is flashing).

**Accept a call:** When receiving a call, press a function button to accept a call. Press and hold a function button for 3 seconds to reject a call.

**Problems in carrying out a call:** If there is no signal during a call, you can hear: «there is no connection to network, please call later». Please check the device signal and try again later.

Press and hold a function button.

## Charging of the device



Charging slot

Charging cable

Plug a power adapter into slot, then a flashing green indicator lights up. Charging of the device began. A steady green light indicates a full charge of the device.

A reminder of low battery: If a device battery level is less than 15%, red indicator start to flash. Please promptly recharge the device.

## Presence of toxic and hazardous substances

Name of part	Pb	Hg	Cd	Cr6+	PBB	PBDE	PBDE
Main body	X	0	0	0	0	0	0
Battery	0	0	0	0	0	0	0
Additional accessories	0	0	0	0	0	0	0

O: toxic and harmful substances in all components of the device are contained in an amount below the limit value, according to SJ / T11363-2006 «Limit requirements for toxic and hazardous substances in products.»

X: indicates a presence of toxic and harmful substances, at least one of components of this product in excess of a limit value, according to SJ / T11363-2006 «Limit requirements for toxic and hazardous substances in products.»

This product complies with European RoHS requirements and standards for environmental protection; international countries still can not replace or reduce an aluminum content of a copper alloy. In terms of environmentally management stated, that under normal operating conditions, is not possible leakage of hazardous substances or elements.

### Electromagnetic radiation coefficient (SAR)

Maximum electromagnetic radiation coefficient of this unit <2.0 W / kg, which corresponds to requirements of GB 21288-2007 international standard.

## Cautions

1. Your device has a built-in battery. Please, do not leave it near heat sources to prevent ignition.
2. If water seeps into the device may cause it to malfunction.
3. Recommended voltage for 5V --- 400mA charging device.
4. It is strictly forbidden to wear the device with a pacemaker, hearing aid or cochlear implant.
5. It is strictly forbidden to use the device in hospitals and gas stations.

To install Smart Home APP, scan a QR-code, or search and download it to APP Store «Mi Smart Home».

This device is already in list of Mi Smart Home devices, supports MIUI system and can interface and interact with other Mi Smart Home devices.

## Main characteristics

Title: GSM wireless data terminal;

Model: DPSDWQ01LQ;

CMIIT ID: 2016CP2868;

Battery: Lithium-ion battery 4.35V 760mAh;

Rated power: 5V --- 2A MAX;

Communication Network: GSM 900/1800;

Size: 53.5 x 30 x 16mm;

Weight: 40g;

Operating temperature: -10C - 50C;

Requirements: Android 4.2 system and later, iOS 7.0 and above system;

If you have questions, please contact Mi Customer Service Center;

Company-customer: «Xiaomi Tongxun Technology» Ltd.;

Producer: «Shanghai Xiaoxun Technology»;

Address: Shanghai city, Xuhui District, 401, Caobao Street, Building 9 (Number 1).