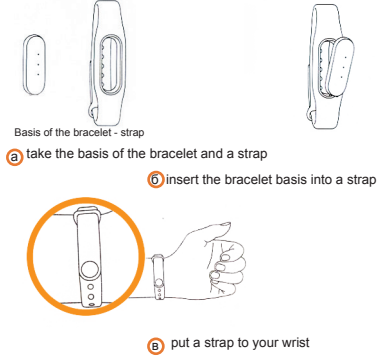




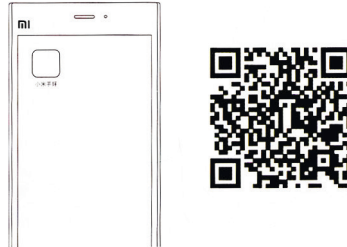
Mi band

1. Xiaomi's Fitness-Bracelet (Mi band) assembling



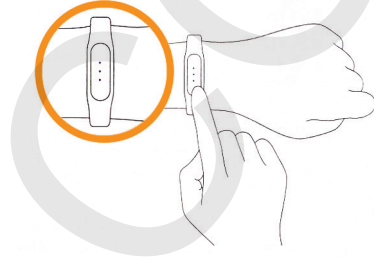
2. Mi band App installing

Please, install the Mi band App or scan the pictured below QR-code and download the Mi band App.



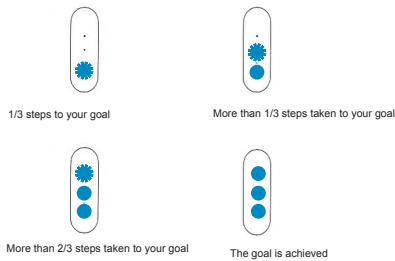
3. Mi band synchronization

Turn the Mi band App on. Then your Xiaomi smartphone should detect the Fitness-Bracelet on base of the smartphone's registration number. The indicators on the smartphone will turn blue. Gently press them few times to finish the registration.



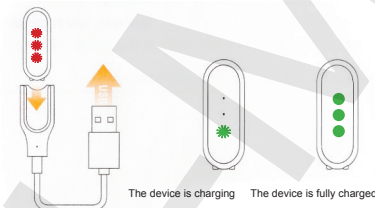
Mi band usage

After a successful synchronization the Mi band immediately starts to monitor the activity of your movements and the trace quality of your sleep. The quantity of included indicators shows the intensity of your movements. You can look at your bracelet and check the indicators at any time.



Charging the battery

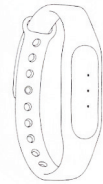
3 red flashing lights indicate the battery is running low. Please, charge your device.



Main specifications *

The total weight: 5.0g
Battery capacity: 41mAh
Operating temperature range: -10C – 50C
Length of the bracelet: 225mm
Material of the fastener: aluminum alloy
Requirements: synchronized with Android 4.4, as well as synchronized via Bluetooth with Xiaomi 4.0

Battery type: lithium-polymer battery
Synchronization: Bluetooth 4.0
Water resistance level: IP67
Adjustable length: 157mm-205mm
Strap: polyurethane



* all technical information is valid. Xiaomi retains final authority in its interpretation

The presence of toxic and hazardous substances

Title	Toxic and hazardous substances or elements					
	Pb Plumbum	Hg Mercury	Cd Cadmium	Cr Hexavalent Chromium	PBBs polybrominated biphenyls	PBDEs polybrominated diphenyl ethers
Basics of the bracelet	X	O	O	O	O	O
Battery	O	O	O	O	O	O
Strap	O	O	O	O	O	O
Bracelet fastener	O	O	O	O	O	O
USB cable	X	O	O	O	O	O

O: toxic and hazardous substances in all parts of the device contain in an amount below the threshold according to the SJ/ T11363-2006 "The requirements on restriction toxic and harmful substances in the goods."

X: means the presence of toxic and hazardous substances at least in one part of this device in the quantity exceeding the limit value according to the SJ/ T11363-2006 "The requirements on restriction toxic and harmful substances in the goods."

The copper alloy of the bracelet basics and USB-cable contains a small amount of an aluminum alloy.
 This device complies with the European requirements RoHS and the standards for environmental protection; international countries still cannot replace or reduce the content of aluminum in copper alloy.

Warranty

The warranty service of Xiaomi Fitness-Bracelet "Mi band" is carried out in accordance with the law of «consumer rights» and the «Law on the quality of products.»

The warranty service includes:
 During the warranty period you have the right to repair, change or return the item. For repair, replacement or product return you must provide a receipt.

1. Within 7 days from the date of purchase, if the problem from the «List of faults» occurs, Xiaomi service center determines the cause of the problem. Then you choose between free product replacement, refund or repair.
2. Within 8-15 days from the date of purchase, if the problem from the «List of faults» occurs, Xiaomi service center determines the cause of the problem. Then you choose between free product replacement or repair.
3. Within 12 months from the date of purchase, if the problem from the «List of faults» occurs, Xiaomi service center determines the cause of the problem. Then you are provided with free repair.

Xiaomi Fitness-Bracelet list of faults

Title	Faults
Basics of the bracelet	- the initial configuration function is not working - indicators fail to light - vibration does not work - wrong definition of steps - occurrence of cracks due to the material or construction apparatus
USB-cable	improper bracelet charging

If you have questions on the use (service) of the product, visit the official Xiaomi website: www.xiaomi-mi.com